

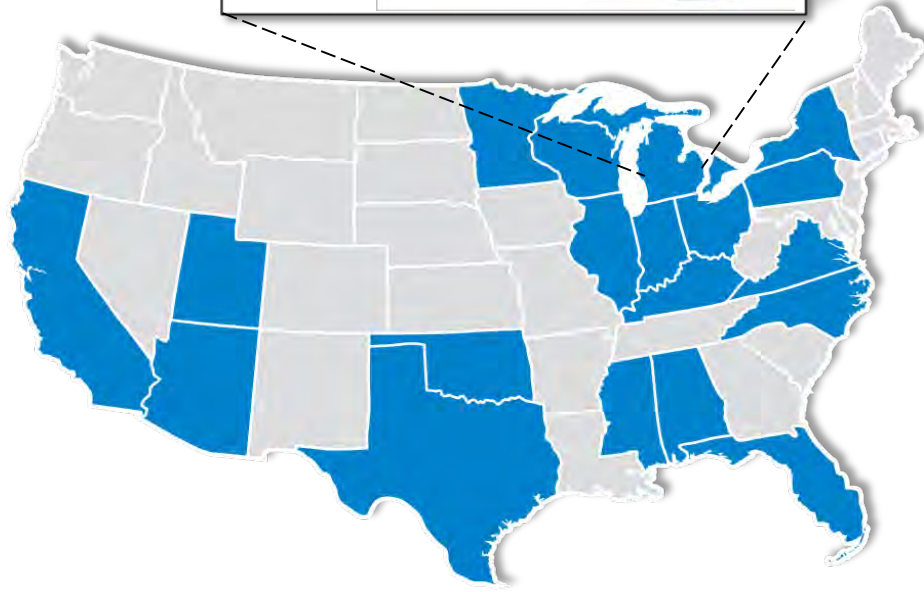
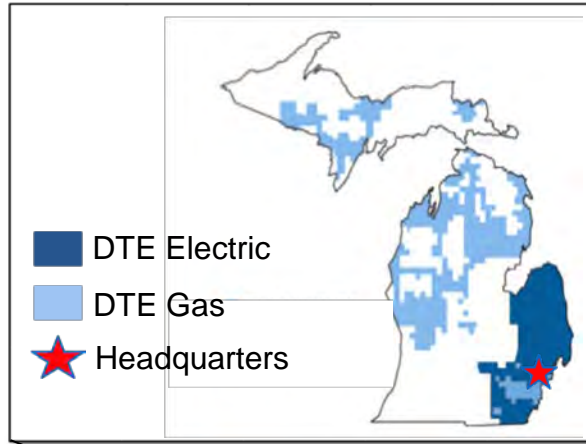


Michigan Association of Mayors

Carla Gribbs, Regional Manager
Michael Twomley, Plant Manager

July 2017

DTE Energy is a diversified energy company with deep Michigan roots



Our Businesses

- Fortune 300 company
- Market cap ~\$16 billion
- Two utilities serving Michigan
 - DTE Electric (founded 1886)
 - DTE Gas (founded 1849)
- Non-utility businesses with operations in nearly 20 states

Our Regulated Utility

- 2.1 million electric customers
- 1.2 million gas customers
- Approximately 10,000 employees

Video



Smart meters were critical to restoring power and reaching vulnerable customers. We also launched an extensive community outreach initiative



March 2017 Storm



Critical Role of Smart Meters

Generated outage notifications and tracked customer outages

Confirmed service restorations

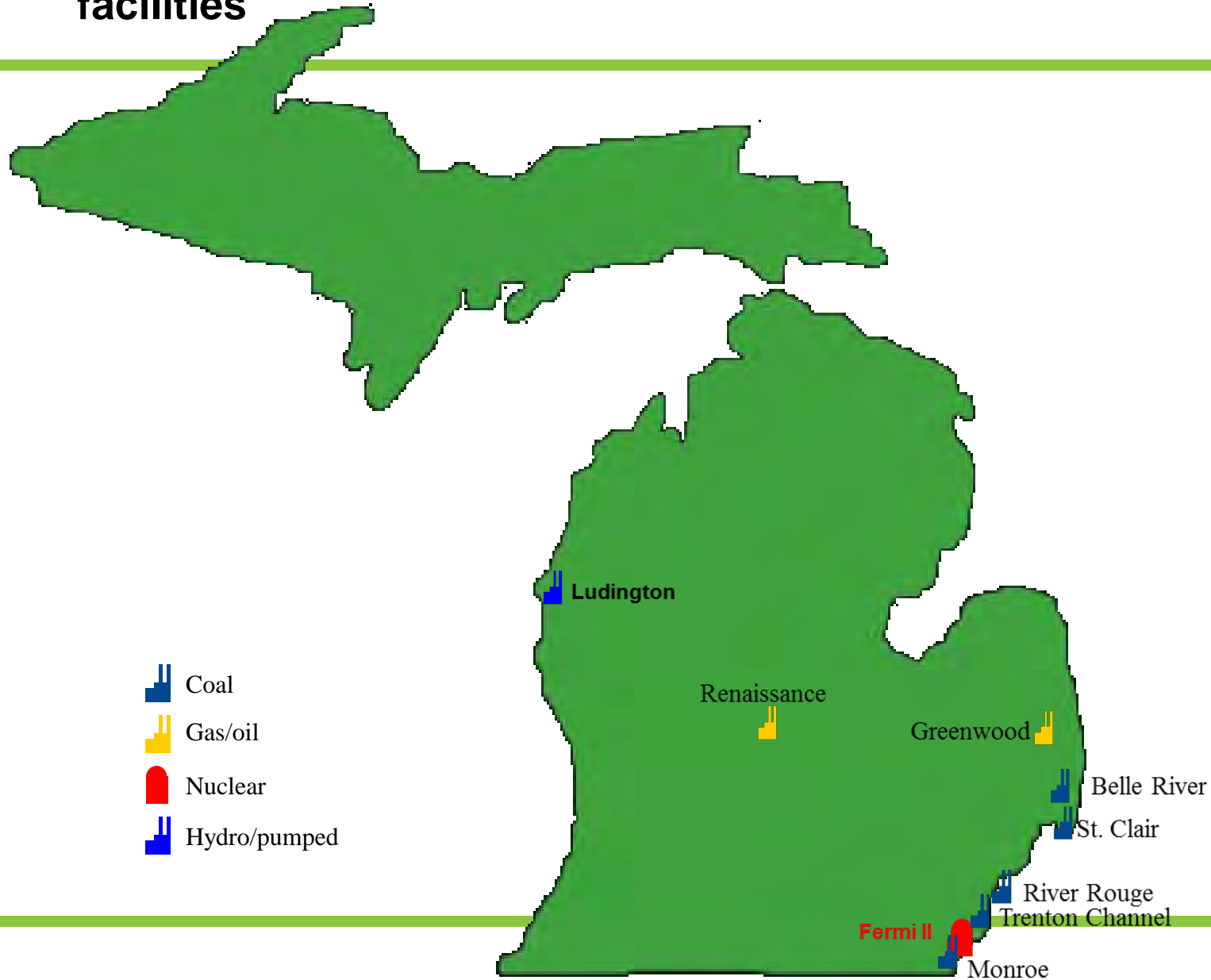
Helped DTE to aid vulnerable customers

Community Outreach Efforts

Worked with MML, MTA, MAC and communities to publicize nearly 80 warming centers that served approximately 1,000 customers

Worked with United Way and American Red Cross for warming centers
Coordinated with Detroit faith-based community on direct outreach

DTE Energy has nine major power generating facilities



Unique features of Monroe Power Plant

- Monroe Power Plant is located near the shores of the Raisin River and Lake Erie
- With 1,200 acres, Monroe is the largest generating plant in the State of Michigan, and one of the largest in the Midwest and in North America
- Monroe Power Plant's property sits within three communities, The City of Monroe, Frenchtown and Monroe Townships.
- Monroe provides about 40% of DTE Electric Company's total electrical capacity
- Monroe has one of the world's largest coal blending facilities which can combine LS Western and LS & MS Eastern coals, to minimize customer cost and meet environmental regulations
- Monroe employs around 400 permanent employees and 100 long term contract employees, along with 200-400 temporary construction employees for Periodic Maintenance Outages.

Fuel Consumption at Monroe Power Plant

- At full load, the plant will consume 32,000 tons of coal per day, which is about 2.5 unit trains
- On average, the plant receives 8 – 9 million tons of coal via Rail and Vessel



- The average unit train is 120 – 125 cars long, each carrying about 100 tons of coal
- Ships unload 28,000 to 40,000 tons of coal depending on river depth

Monroe Power Plant Environmental Achievements



- Plant was ISO 14001 certified in 2003
- Plant gained Wild Life Habitat in 2001
- Clean Corporate Citizen Certified
- State of Michigan Lotus Blossom Habitat
- Host of Annual U.S. Fish and Wildlife Bald Eagle Tour

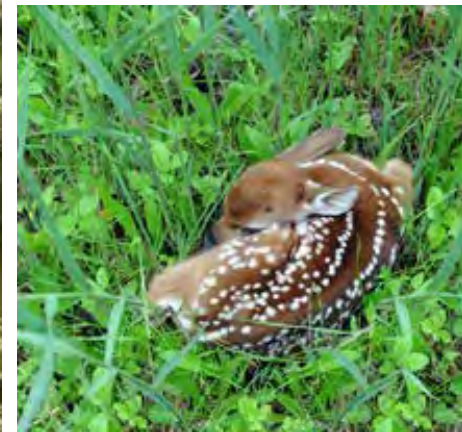


- The American Lotus can be found growing in the waters on the Plant Property and is one of the endangered species that has been identified living in our Wildlife Habitat.

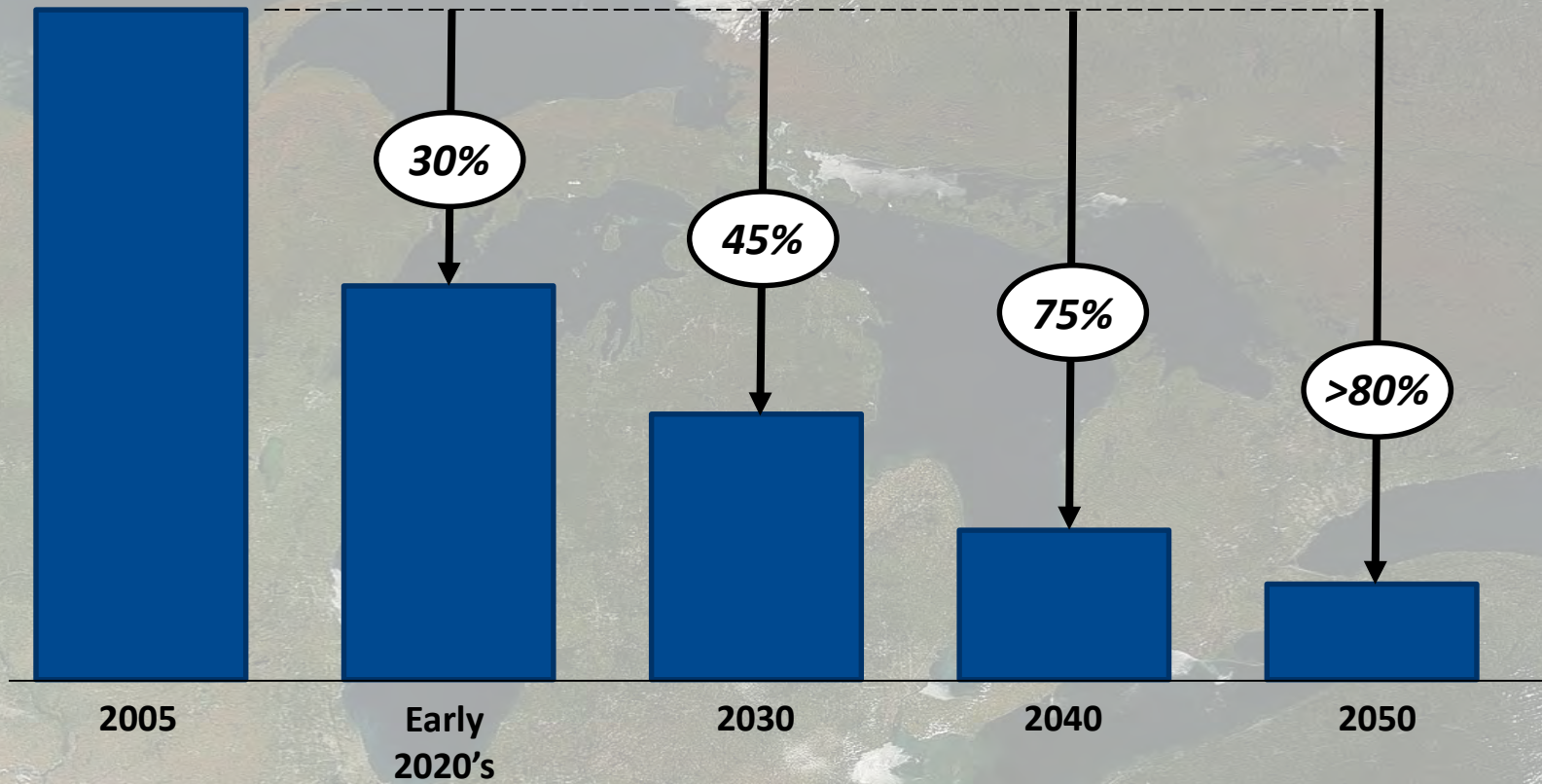
- There have also been nine endangered species of mammals and birds, and one plant species noted on our property
- At our wildlife habitat, 151 species of mammals, reptiles, and birds have been identified

Fermi 2: Providing emissions-free power 24/7

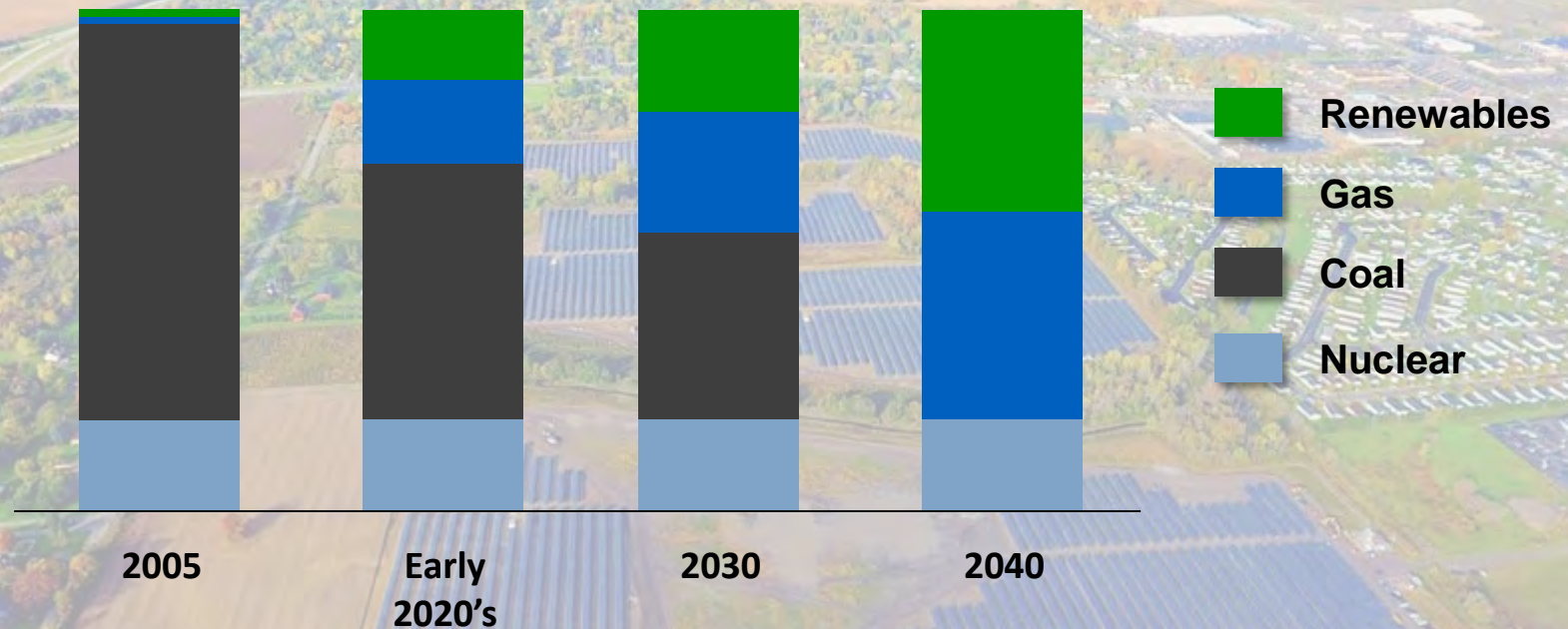
- Began commercial operation 1988
- Produces 1,170 Megawatts – enough to power a city of 1 million
- Employs approximately 850 full-time workers
- Received 20-extension of original operating license, allowing the plant to operate through 2045
- Southeast Michigan's only source of emissions-free baseload power
- Fermi 2 is a key element in DTE's plan to reduce carbon emissions 80 percent by 2050
- More than 600 acres the Fermi site are dedicated to the Detroit River International Wildlife Refuge
- Wildlife on site including eagles, pheasants, deer, fox, mink, turtles, snakes, herons and egrets
- DTE holds license to build and operate Fermi 3,
- DTE not planning to build Fermi 3 in the foreseeable future, but the license provides a valuable long-term option



DTE's Future CO₂ Emissions



Future DTE Generation Mix (% of total)



DTE Energy will continue our focus on Renewable Energy investments with a plan to install an additional 560 megawatts by 2022

Current Renewable Energy Portfolio



13 Wind Projects
907MW



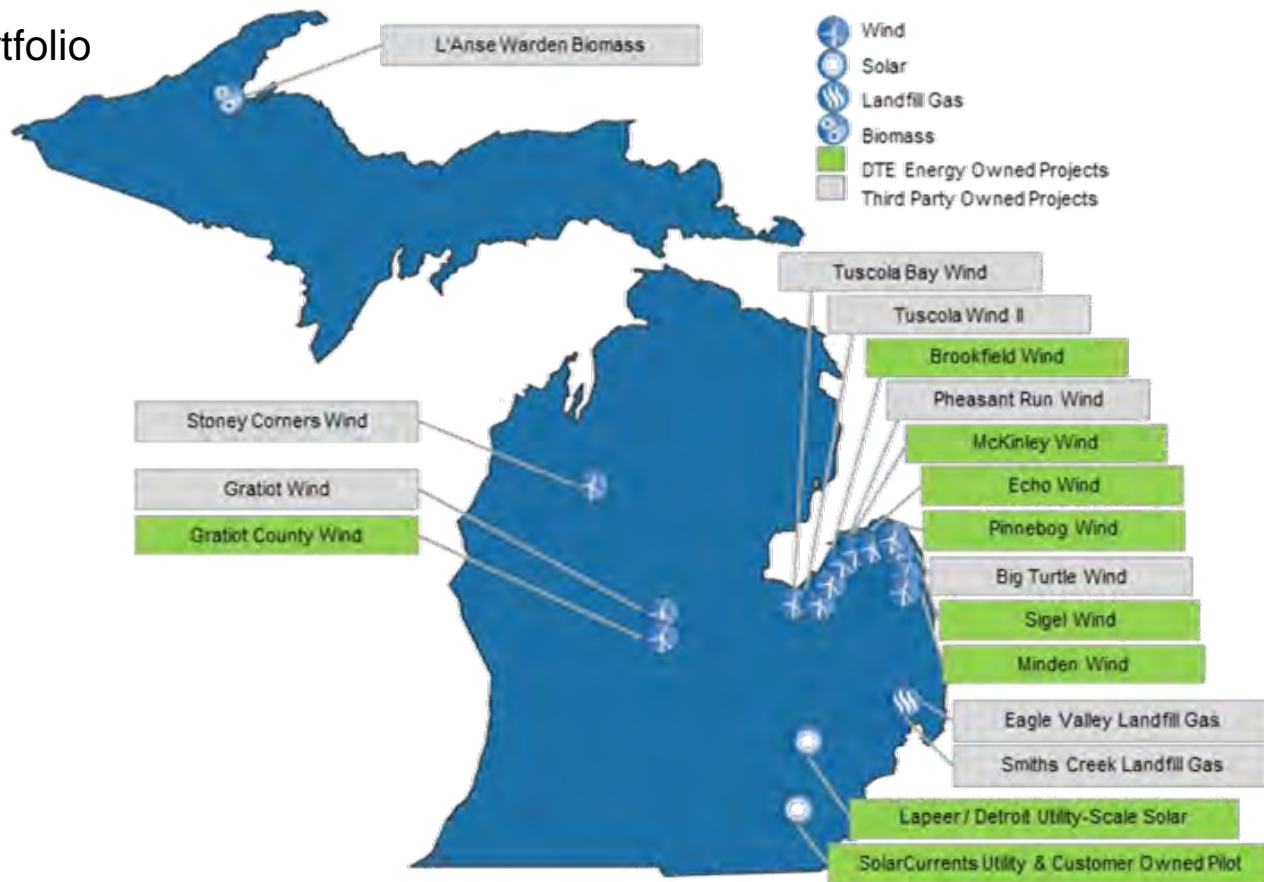
31 Solar Projects
66MW



2 Landfill Projects
6.4MW



1 Biomass Project
17MW




Current savings are equivalent to the energy required to power all the homes in Ann Arbor for over 4 years and to heat these homes for 2 years


More than 2.4 million electric and 1.6 million gas measures have been implemented in DTE's energy efficiency program since inception




Electric & Gas Participation

 **34,000,000**
Bulbs


 **182,000**
Recycled Appliances

 **339,000**
Apartment Units

 **267,000**
Direct Install Homes

 **242,000**
Home and School Kits

 **385,000**
Rebate Checks

 **59,000**
Low-Income Weatherization



Thank you